



T&S BRASS AND BRONZE WORKS, INC.

2 Saddleback Cove / P.O. Box 1088
Travelers Rest, SC 29690



REG. #A2601
ISO #9001

Model No.
B-0892-LF05-XP

Item No.

Travelers Rest, SC: 800-476-4103 Simi Valley, CA: 800-423-0150 Fax: 864-834-3518 www.tsbrass.com

This Space for Architect/Engineer Approval

Job Name _____ Date _____

Model Specified _____ Quantity _____

Customer/Wholesaler _____

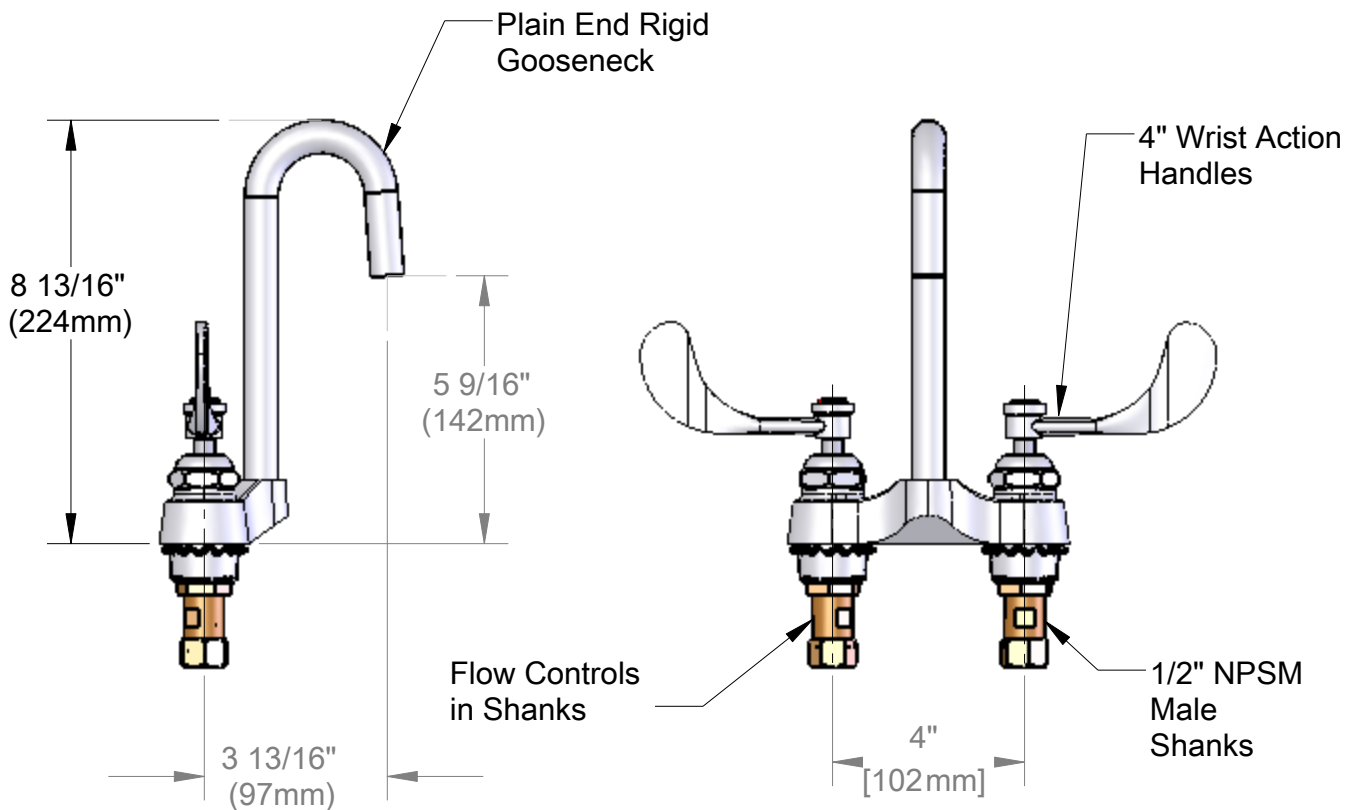
Contractor _____

Architect/Engineer _____

- Variations or Applicable Options:
- WH6 6" Wrist Action Handles
 - 177F Lever Handles
 - 175F 4-Arm Kitchen Handles



ADA COMPLIANT



Product Specifications:

4" Centerset Mixing Faucet w/ 1/2" NPSM Male Flow Control Shanks, 0.5 GPM, Cerama Cartridges, 4" Wrist Action Handles, Plain End Rigid Gooseneck

Drawn
WJS

Checked
JHB

Approved
JHB

Scale:

1:4

Date:

7/28/2006



T&S BRASS AND BRONZE WORKS, INC.

2 Saddleback Cove / P.O. Box 1088
Travelers Rest, SC 29690

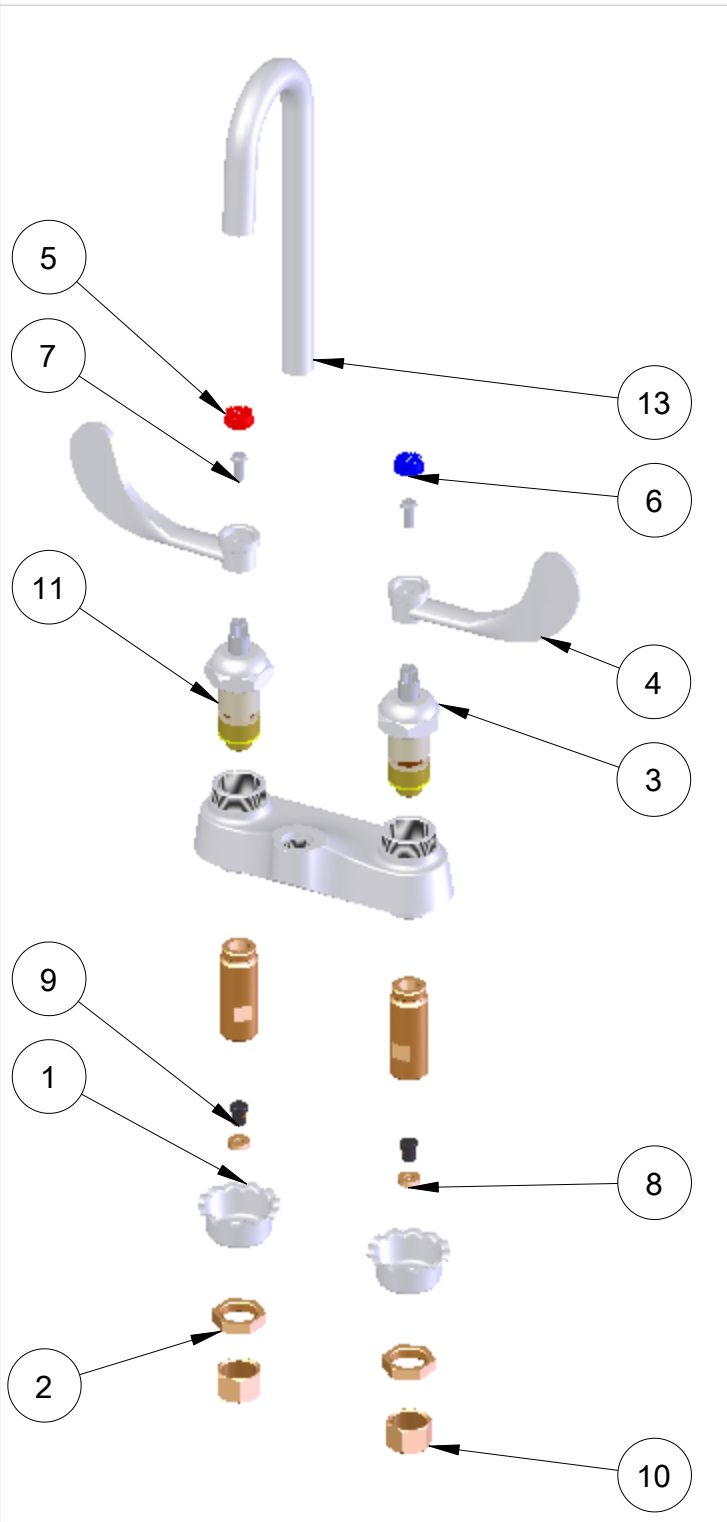


REG. #A2601
ISO #9001

Model No.
B-0892-LF05-XP

Item No.

Travelers Rest, SC: 800-476-4103 Simi Valley, CA: 800-423-0150 Fax: 864-834-3518 www.tsbrass.com



ITEM NO.	SALES NO.	DESCRIPTION
1	001000-45	Rosette Washer
2	002954-45	Shank Lock Nut
3	011278-25	Ceramic Cartridge
4	B-WH4	4" Wrist Action Handle
5	001194-45	Red HW Index
6	001686-45	Blue CW Index
7	000925-45	Lab Handle Screw
8	009069-45	Flow Control Holder
9	001640-45	Flow Tower, 0.5 GPM
10	000958-20	Coupling Nut
11	011279-25	Ceramic Cartridge
13	006632-40	Rigid GN

Product Specifications:
4" Centerset Mixing Faucet w/ 1/2" NPSM Male Flow Control Shanks, 0.5 GPM, Cerama Cartridges, 4" Wrist Action Handles, Plain End Rigid Gooseneck

Drawn WJS	Checked JHB	Approved JHB
Scale: 1:4		Date: 7/28/2006