



# T&S BRASS AND BRONZE WORKS, INC.

2 Saddleback Cove / P.O. Box 1088  
Travelers Rest, SC 29690



REG. #A2601  
ISO #9001

Model No.  
**B-2446**

Item No.

Travelers Rest, SC: 800-476-4103 Simi Valley, CA: 800-423-0150 Fax: 864-834-3518 www.tsbrass.com

This Space for Architect/Engineer Approval

Job Name \_\_\_\_\_ Date \_\_\_\_\_

Model Specified \_\_\_\_\_ Quantity \_\_\_\_\_

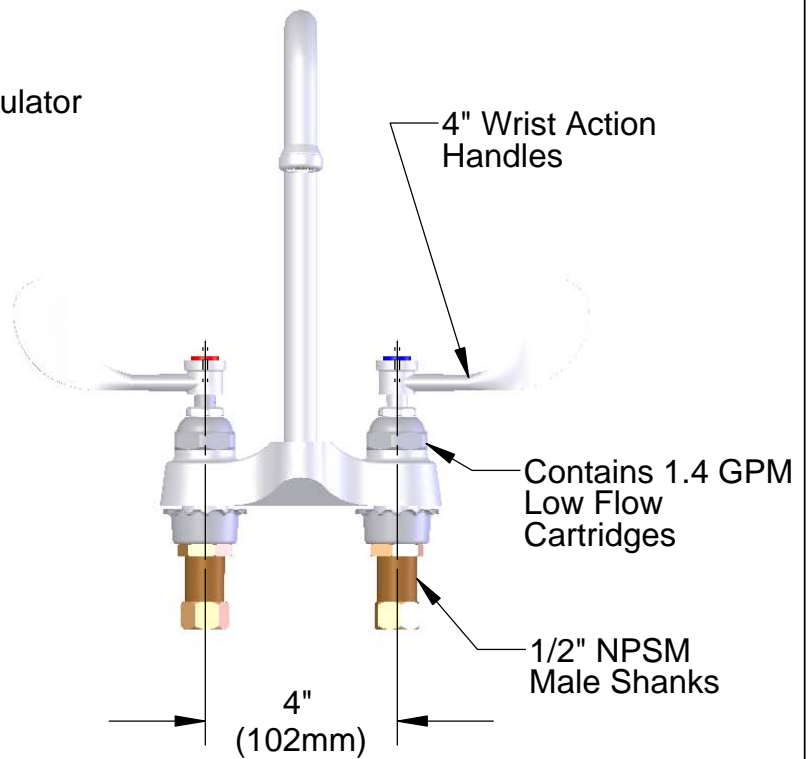
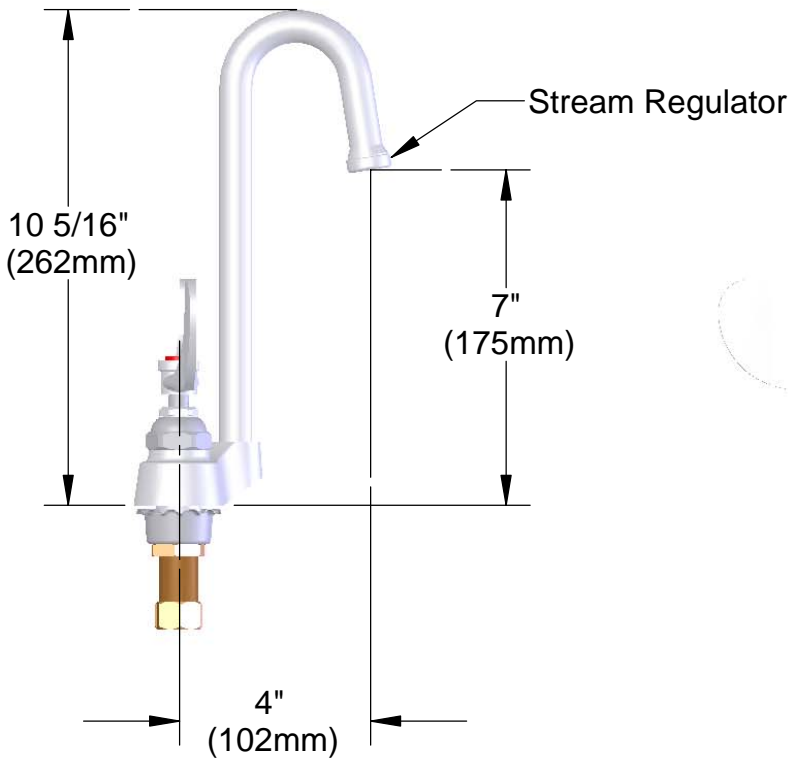
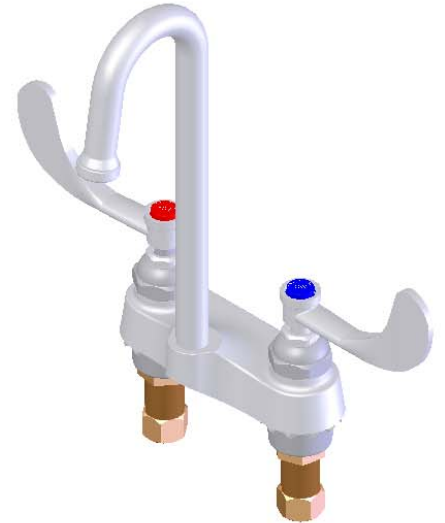
Customer/Wholesaler \_\_\_\_\_

Contractor \_\_\_\_\_

Architect/Engineer \_\_\_\_\_

Variations or Applicable Options:

- WH6 6" Wrist Action Handles
- 177F Lever Handles
- 175F 4-Arm Kitchen Handles



Product Specifications:  
4" Centerset Mixing Faucet, 1/2" NPSM Male Shanks,  
1.4 GPM Flow Control Cartridges, 4" Wrist Action  
Handles, Rigid Gooseneck, Stream Regulator

Drawn WJS	Checked JRM	Approved JHB
Scale: 1:4		Date: 3/13/2006



# T&S BRASS AND BRONZE WORKS, INC.

2 Saddleback Cove / P.O. Box 1088  
Travelers Rest, SC 29690



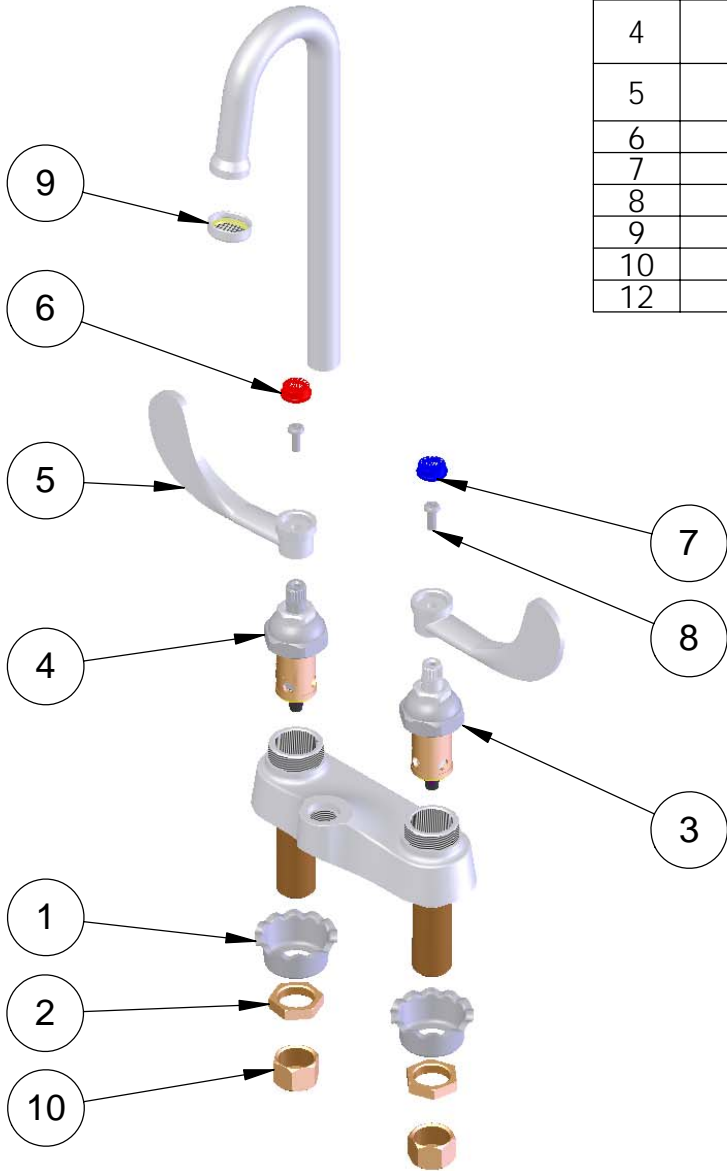
REG. #A2601  
ISO #9001

Model No.  
**B-2446**

Item No.

Travelers Rest, SC: 800-476-4103 Simi Valley, CA: 800-423-0150 Fax: 864-834-3518 www.tsbrass.com

ITEM NO.	SALES NO.	DESCRIPTION
1	001000-45	Rosette Washer
2	002954-45	Shank Lock Nut
3	013899-40	Eterna Ctg, 1.4 GPM,CW
4	013900-40	Eterna Ctg, 1.4 GPM,HW
5	B-WH4	4" Wrist Action Handle
6	001194-45	Red HW Index
7	001686-45	Blue CW Index
8	000925-45	Lab Handle Screw
9	007241-40	Index Ring Asm.
10	000958-20	Coupling Nut
12	005028-40	Gooseneck



**Product Specifications:**

4" Centerset Mixing Faucet, 1/2" NPSM Male Shanks,  
1.4 GPM Flow Control Cartridges, 4" Wrist Action  
Handles, Rigid Gooseneck, Stream Regulator

Drawn <b>WJS</b>	Checked <b>JRM</b>	Approved <b>JHB</b>
Scale: <b>1:4</b>		Date: <b>3/13/2006</b>