



T&S BRASS AND BRONZE WORKS, INC.
 2 SADDLEBACK COVE / P.O. BOX 1088 / TRAVELERS REST, SC 29690
 PHONE 800-476-4103 - FAX 864- 834-3518



Model No.

EV-2102-SM

**RELIABILITY
 BUILT IN**

Job Name:

Architect/Engineer Approval:

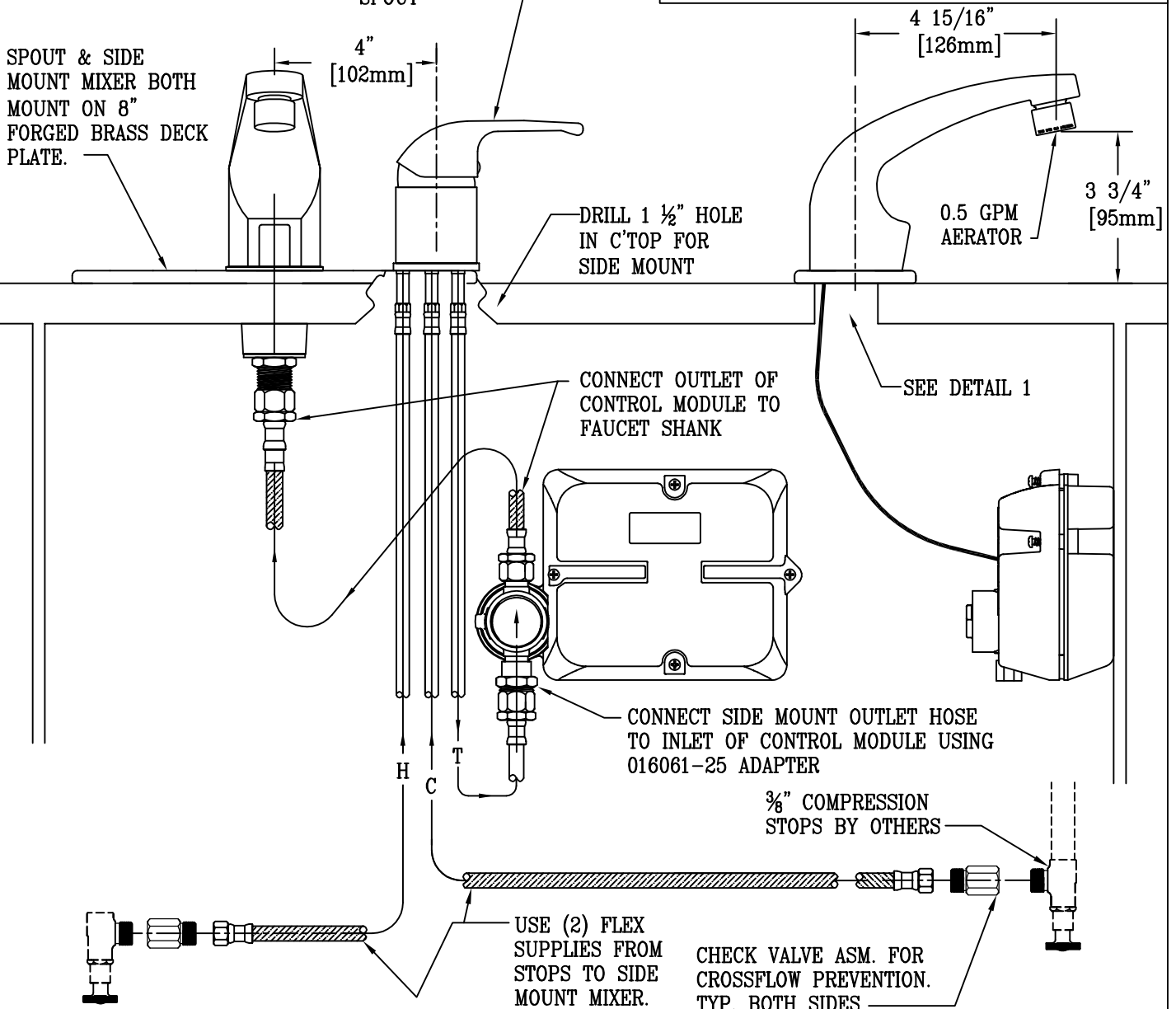
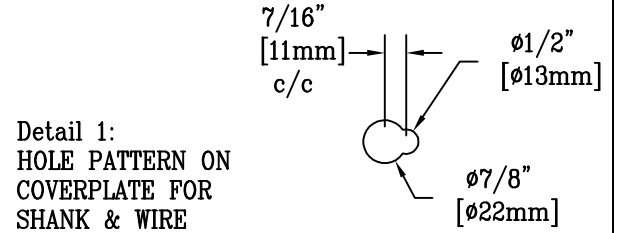
Notes:

NOTE:

TO ENSURE PROPER OPERATION OF SENSOR FAUCET, SIDE MOUNT MIXER SHOULD REMAIN IN THE OPEN POSITION AT ALL TIMES

SIDE MOUNT MIXER CONTROLS TEMPERATURE OF WATER THROUGH SENSOR MODULE & TO SPOUT

SPOUT & SIDE MOUNT MIXER BOTH MOUNT ON 8" FORGED BRASS DECK PLATE.



Product Description:
 DECK MOUNT ELECTRONIC SENSOR FAUCET WITH
 SIDE MOUNT MIXER, 8" FORGED BRASS DECKPLATE
 AND CHECK VALVE ASSEMBLIES FOR CROSSFLOW PREVENTION

Drawn: WJS	Checked: GEF	Scale: 1 : 4
Approved: JHB	Date: 12/22/06	